

# M48 Severn Bridge

**Update**

**08-06-26**



# M48 Severn Bridge

## Short-Term Solution



# M48 Weight Limit Implementation

- 7.5t weight limit implemented 27<sup>th</sup> May 2025
- Compliance remains good with only minor transgressions
- Targeted Enforcement continues
- Loadings remain well within acceptable safety tolerances

# M48 Severn Bridge

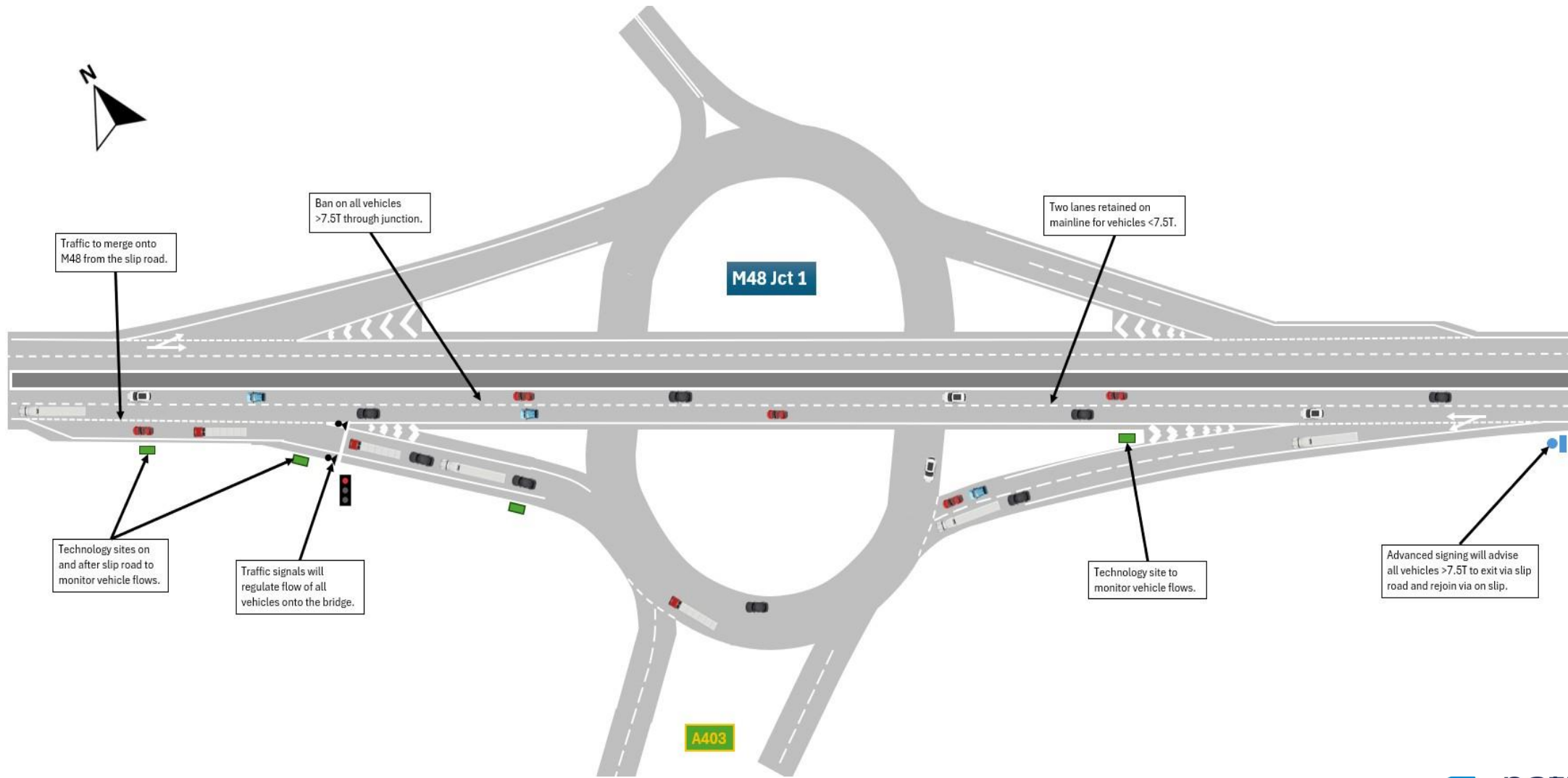
## Medium-Term Solution



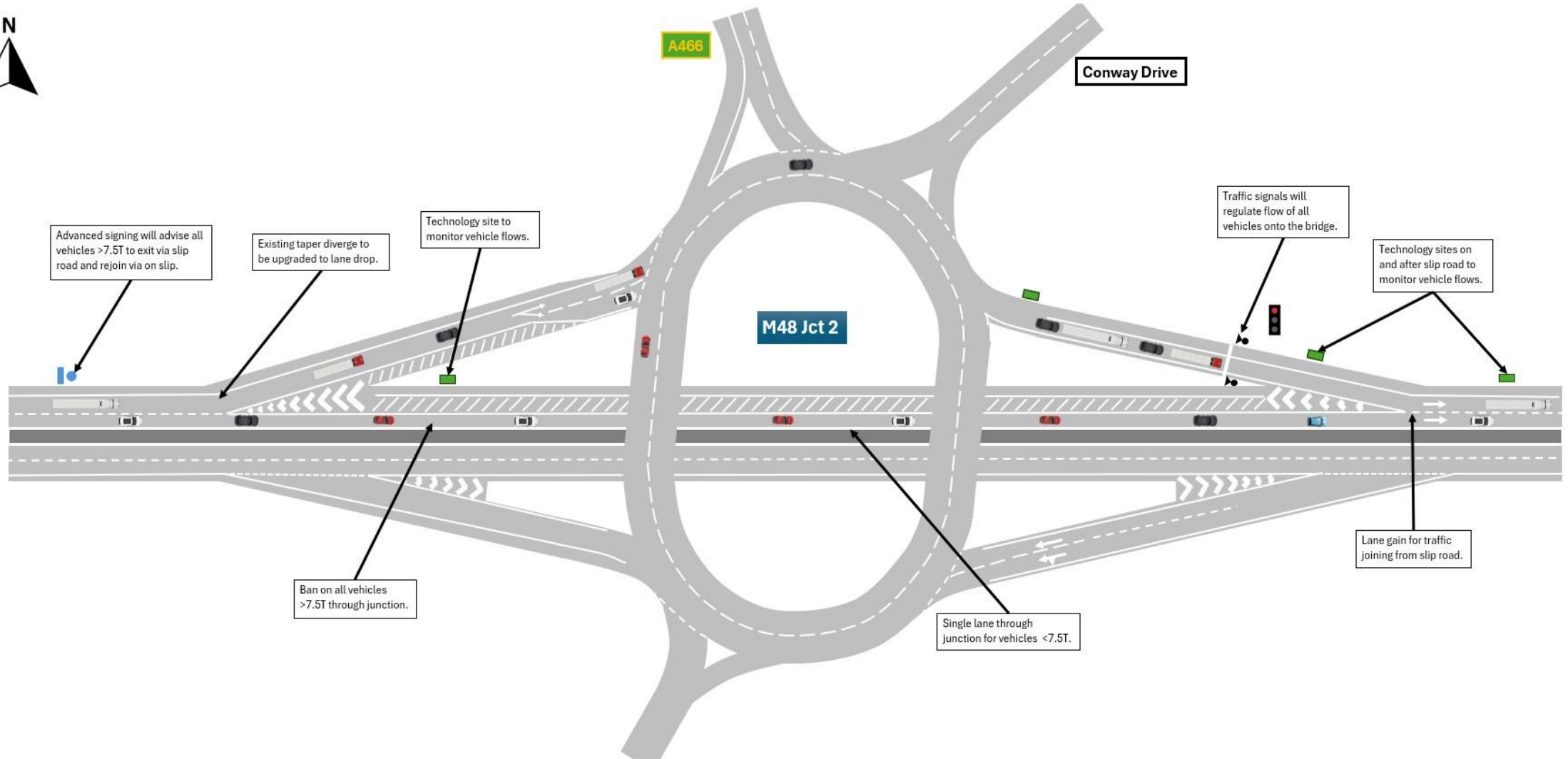
# The Solution

- Technology based HGV access controls
- Limited physical infrastructure (signs/signals)
- Full HGV access except Eastbound AM (0600-1000)
- Exploring **Local** and **Weekend** HGV exemptions

# Junction 1



# Junction 2



# Next Steps

- Finalise traffic modelling & impact assessment
- Resolve nature /extent of AM peak-hour restrictions
- Commence TTRO/SI drafting
- Technology Trials
  - Factory Acceptance Tests
  - Site Acceptance Tests – Moreton-in-the-Marsh test track
- User workshops – **July**.
- Contract physical engineering works (signs, lines, kerbing)

# Programme

## Medium Term Solution

	2025									2026													
	APR	MAY	JUN	JUL	AUG	SEP	OCT	NOV	DEC	JAN	FEB	MAR	APR	MAY	JUN	JUL	AUG	SEP	OCT	NOV	Dec	Jan	
Project Initiation	✓																						
Team Mobilisation	✓	✓																					
Scoping & Procurement	✓	✓																					
Feasibility 1: Sifting		✓	✓	✓																			
Feasibility 2: Development					✓	✓																	
Options Selection						✓	✓																
Communications							✓	✓															
Detailed Design							✓	✓	✓	✓	✓	✓	✓	✓	□	□							
Procure & Mobilise											✓	✓	✓	✓	□	□							
Physical Works																							
Testing & Enforcement																							
Bridge Re-Opens to HGVs																							

KEY

✓	Completed
□	Underway / On-Track
□	Not Started Yet

# M48 Severn Bridge

## Long-Term Solution



# Key Elements

- Industry Engagement
- 3D Scanning of Bridge
- Technical Development of Options
- Option Assessment & Selection
- Cable Design & Sourcing
- Tower & Anchor Requirements
- Technical Modelling & Peer Review
- Construction Methods & Programme Development
- Cost Estimation & Risk
- Outline Business Case
- Bridge Management Strategy

# Programme

- 3D Scanning: Summer 2026
- Interim Feasibility Report: Autumn 2026
- Final Report: Winter 2026/27
- Develop Management Strategy: Spring 2027
- New Cable Inspection: Summer 2027

- ANY QUESTIONS?